



Getting Started

In order to allow user customization IESCAD 2016 new location will be your `c:\Users\your_name` folder. YOU should save your current profile before continuing with this installation, so that when you're finished using IESCAD 2016 you can return your AutoCAD settings back to where it was before IESCAD 2016 was installed.

1.0 Installation

1. Copy the IESCAD2016_C3D.zip to your C:\Temp folder.
2. Once copied, right click the IESCAD2016_C3D.zip and select **Extract All**.
3. Make sure the path is set to `c:\temp\IESCAD2016_C3D`.
4. Once the IESCAD2016_C3D folder is created there will be a sub-folder called **Install_IESCAD2016_C3D**, open this folder and double click on the **Install_IESCAD_C3D.cmd** and follow the prompts.
5. If you have a previous version of IESCAD_C3D loaded, you will be prompted :

Did you want to replace the current version IESCAD_C3D 2016 ? (Y/N)

If you select 'Y', you will receive the next prompt:

This will over write any customizations you have made to IESCAD_C3D 2016. Are you sure ? (Y/N)

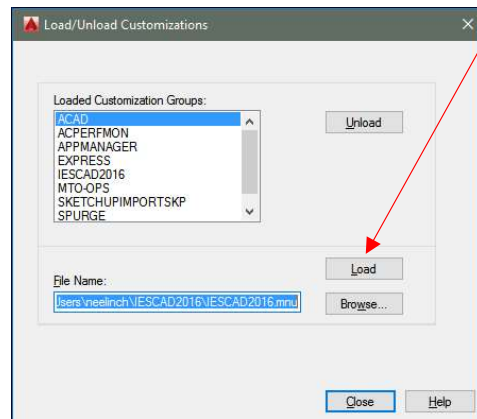
If you select 'Y', the latest version will be copied. If you select 'N', the installation exits.



2.0 Setup

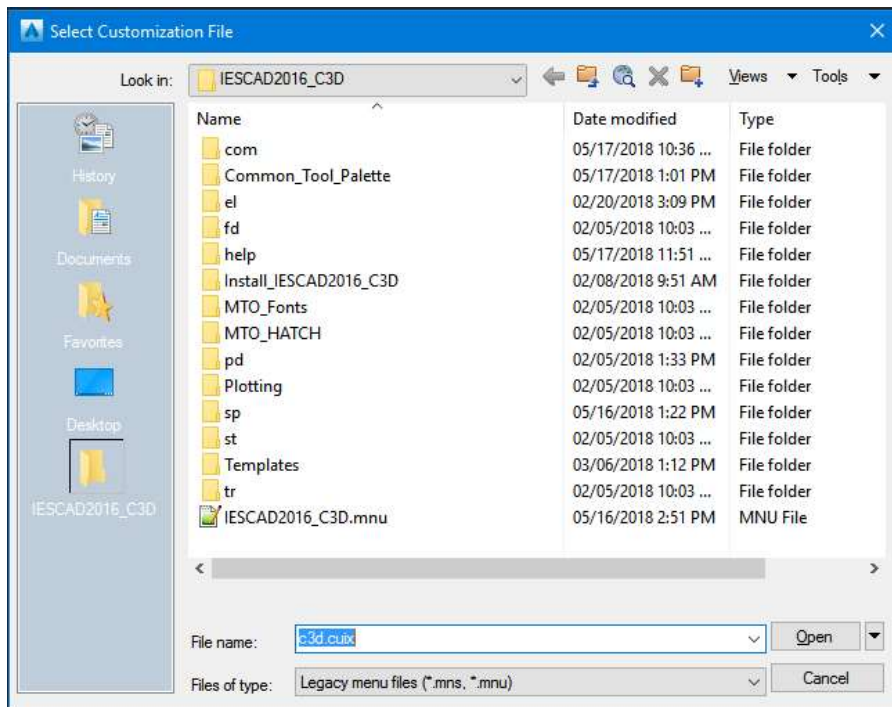
Now that the IESCAD2016_C3D folders have been created and populated there are a few more steps you need to perform to get IESCAD2016_C3D working.

1. Open any file with Civil 3D and key in "MENULOAD".
2. Navigate to `c:\users\yourusername\IESCAD2016_C3D` and select `IESCAD2016_C3D.mnu`
3. On the Load/Unload Customizations window click on the 'Load' button.



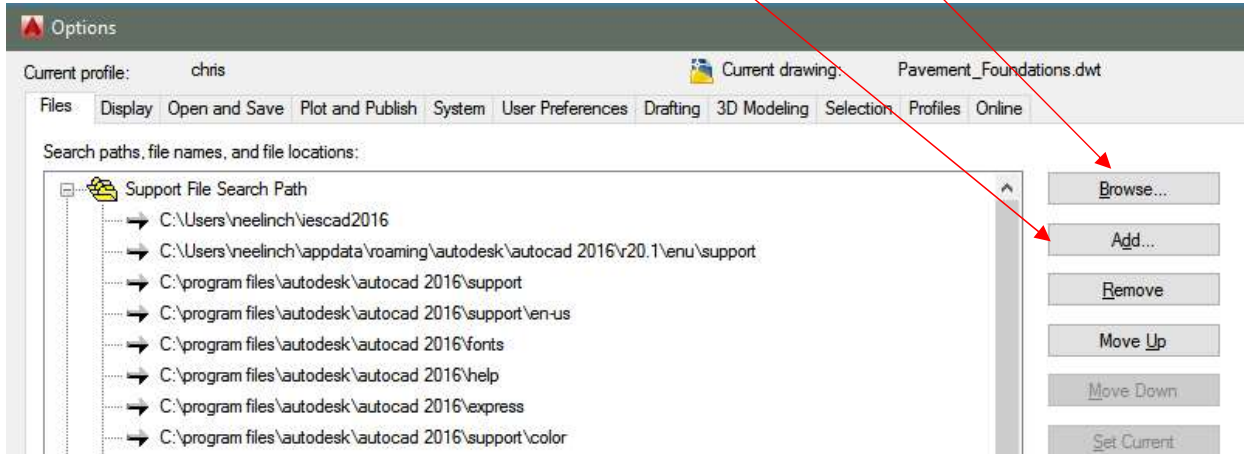
Make sure your filter of type is set to .mns, *.mnu

4. Browse to the Navigate to `c:\users\yourusername\IESCAD2016_C3D` and select `IESCAD2016_C3D.MNU`

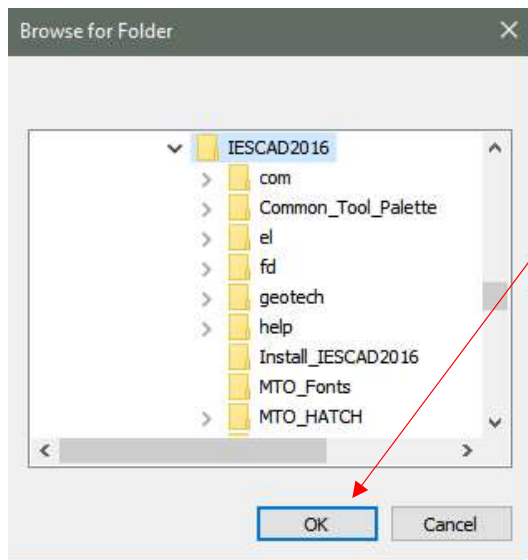




5. After the menu is loaded Key-in “Options” and select the ‘Files’ tab.
6. Expand the Support File Search Path and Select ‘Add’ and then ‘Browse’



7. Browse to the `c:\users\yourusername\IESCAD2016` and click the OK button

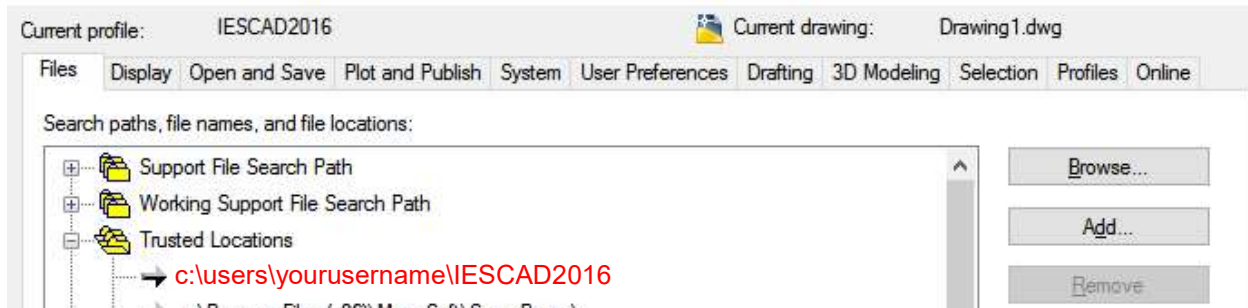




Notes:

For Civil 3D 2016:

Civil 3D 2016 has a 'Trusted Locations Setting' and will display a couple of warning messages on the first load of IESCAD 2016, after which these warnings will stop. You can avoid these warnings by adding the `c:\users\yourusername\IESCAD2016_C3D` path to the 'Trust Locations' folder as displayed below.



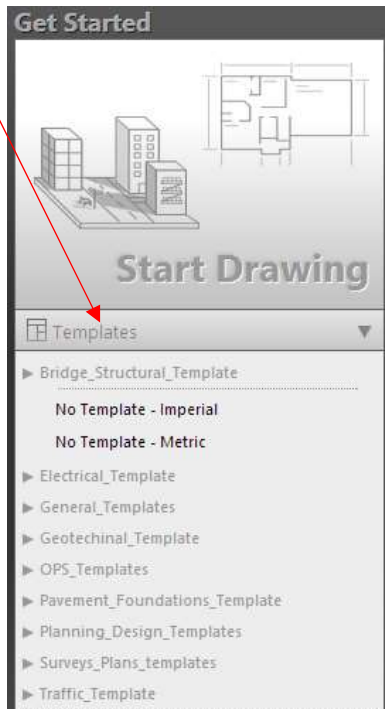
The MTO IESCAD 2016 system is now loaded and will stay loaded until you manually unload it or set your saved 'Profile' as the current profile.



3.0 Selecting the MTO AutoCAD Template

Method #1

After starting AutoCAD 2016 you are presented with the “CREATE” screen. On the left hand side select **Templates**



Now click on, and expand, the template folder and select a template

Method #2

Using the Windows Explorer, navigate to the C:\Users\your username\IESCAD2016\ and click on the Templates folder. Select the appropriate sub-folder and double click the template you need.

